

950  
2½"-10"



**WILKINS**  
a **ZURN** company

**ZURN**

# *Modification Overview*

- Production of the 950 (21/2"-10") began in 1990 and was discontinued in 2004.

# Check Cover Removal

- Cover is o-ring sealed.
  - Loosen bolts 1/2". The spring load is now released from the cover and retained by the check subassembly.
- \*\* Verify spring load before removing all the bolts.



# Check Valve Removal

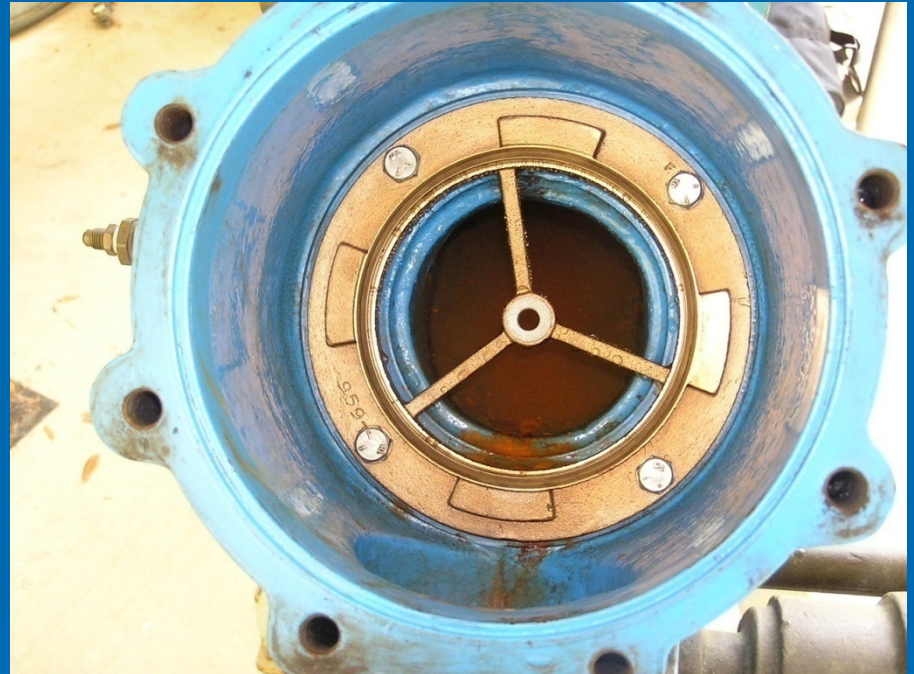
- Center stem guided check assembly.
- Disc & spring subassembly.
- Slide subassembly straight out of seat and body.





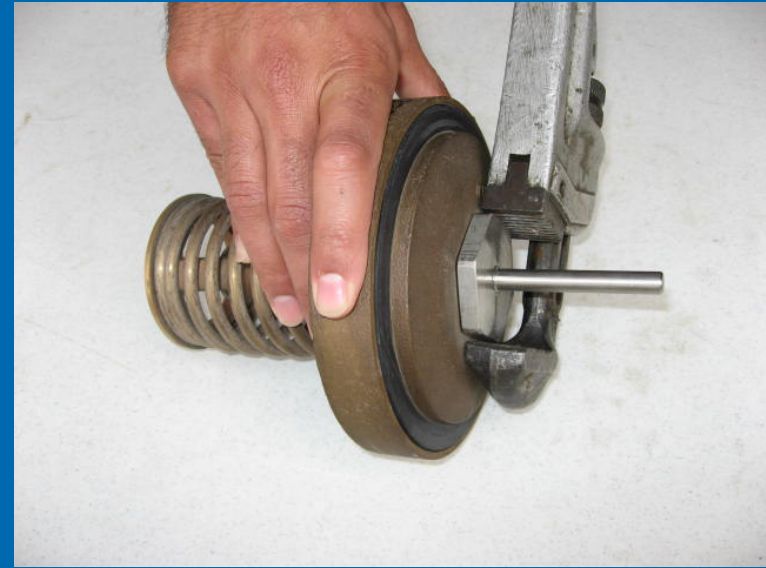
# Check Seat Removal

- Seats are bolted into the body and o-ring sealed.
- Remove the bolts and pull the seat straight out of the body.
- 4"-10" - Inspect plastic guide bushing in center of seat.



# Check Disc Replacement

- Remove retaining nut and disc retainer.



# Check Valve Reassembly Notes

- Reassemble checks in reverse order.
- Lubricate o-rings.

