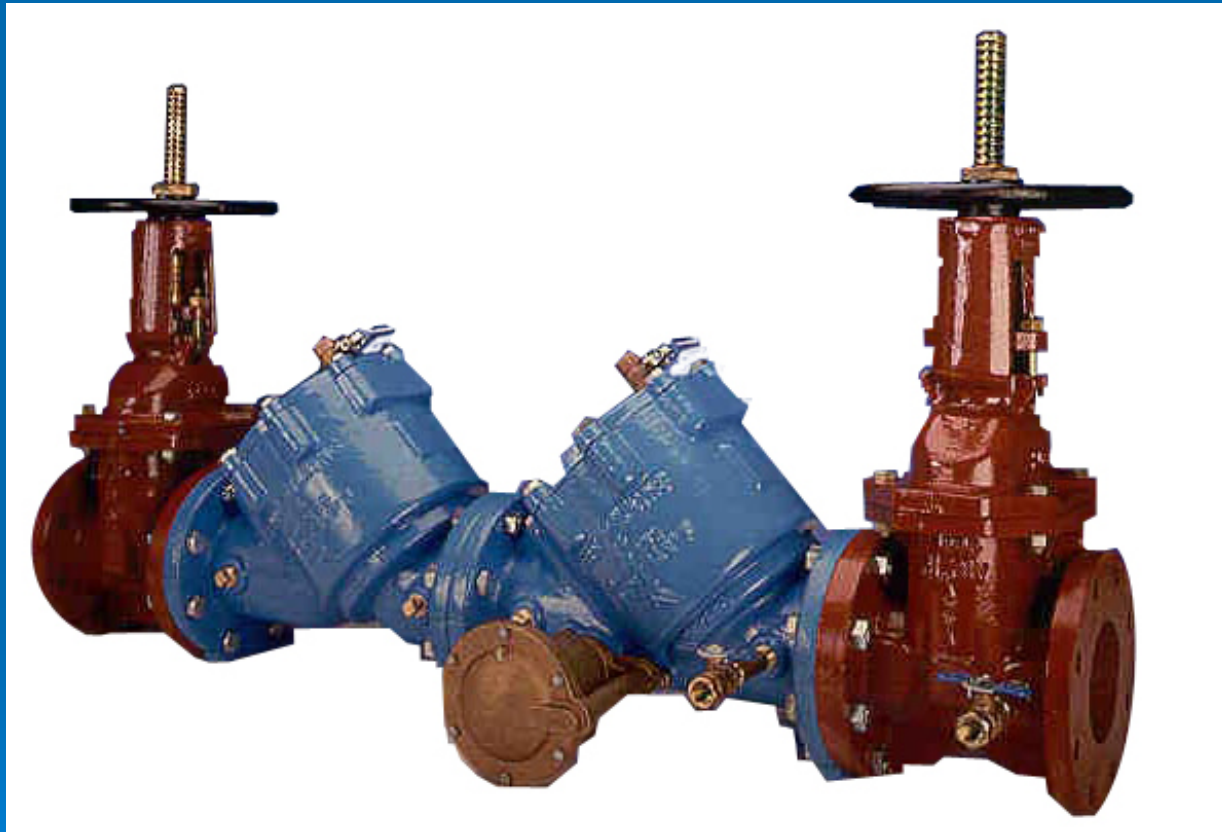


975
2½"-10"



WILKINS
a **ZURN** company

ZURN

Modification Overview

- Production of the 975 (21/2"-10") began in 1990 and was discontinued in 2004.

Check Cover Removal

- Cover is o-ring sealed.
 - Loosen bolts 1/2". The spring load is now released from the cover and retained by the check subassembly.
- ** Verify spring load before removing all the bolts.



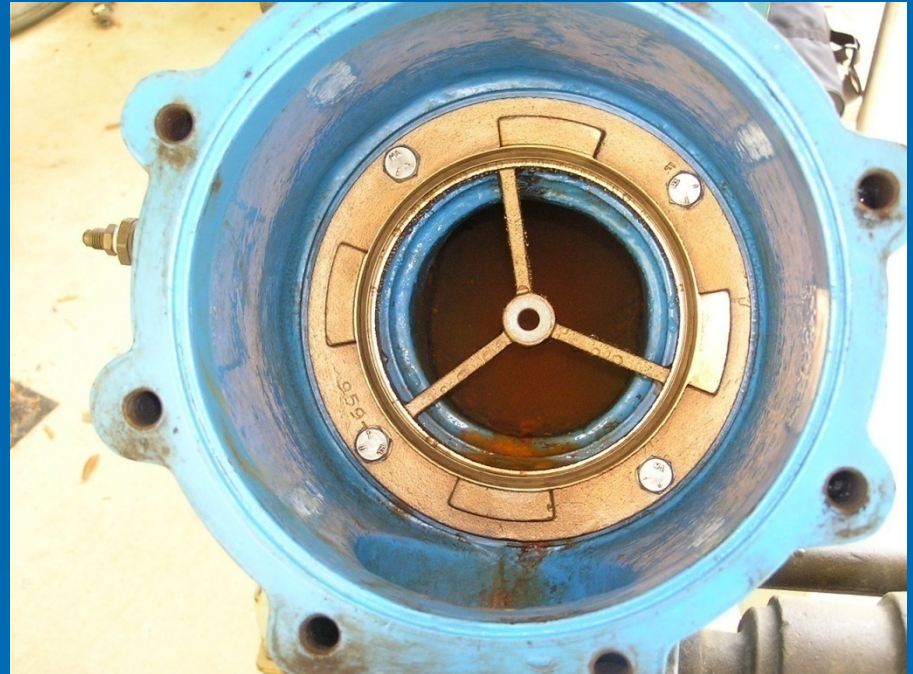
Check Valve Removal

- Center stem guided check assembly.
- Disc & spring subassembly.
- Slide subassembly straight out of seat and body.



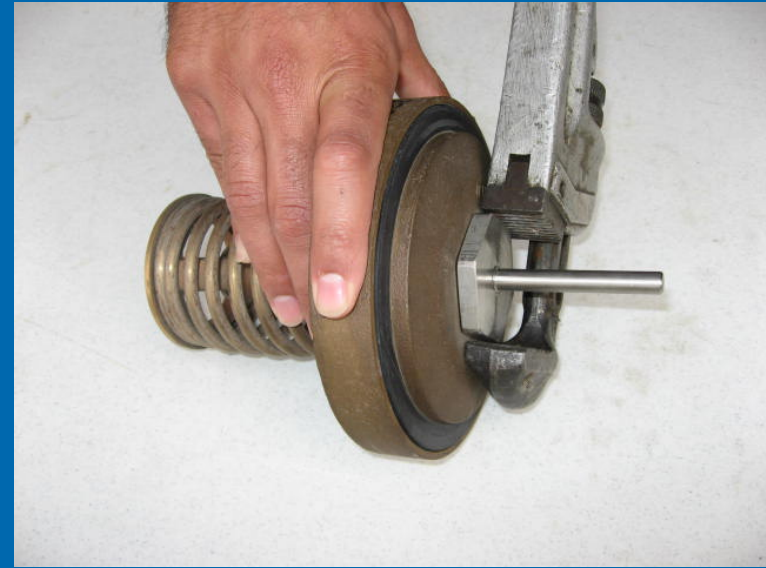
Check Seat Removal

- Seats are bolted into the body and o-ring sealed.
- Remove the bolts and pull the seat straight out of the body.
- 4"-10" - Inspect plastic guide bushing in center of seat.



Check Disc Replacement

- Remove retaining nut and disc retainer.



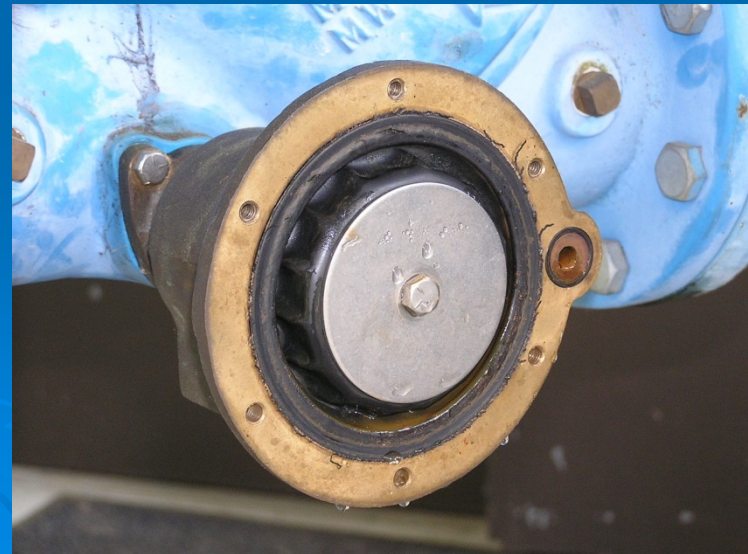
Check Valve Reassembly Notes

- Reassemble checks in reverse order.
- Lubricate o-rings.



RV Cover Removal

- Cover is sealed by the diaphragm.
- There is no spring load on cover.
- Remove bolts.



RV Module Removal

- Module is o-ring sealed.
- Pull the module straight out of body.



RV Seat Removal

- 2 1/2"-6" RV seat is bolted into body and o-ring sealed.
- Remove the allen screws and pull seat straight out of body.
- 8"-10" RV seat is threaded and o-ring sealed.



Disassemble RV Module

- Module is spring loaded.
- Holding the module firmly, remove the stem bolt.



Disassemble RV Module

- Remove the guide bushing from the stem.



RV Disc Replacement

- Remove retaining bolt, disc washer, and disc.
- Reassemble in reverse order.



RV Reassembly Notes

- Bead on the edge of the diaphragm should face the disc end of the module.
- Lubricate o-rings.
- Push the module straight into the body.
- Diaphragm bead will line up with the groove on the RV body.
- Check the sensing line o-ring on the cover.

