



**FEATURES:**

**Sizes:** □ 1/2" – 3/4"      □ 3/4" – 2"

**STANDARDS COMPLIANCE:**

- ANSI/ASME A112.1.2

**MATERIALS:**

Body                                      Polycarbonate  
Fasteners                                Stainless Steel, 300 series

**APPLICATION:**

The Flomatic model AGA is designed for use with 1/2" thru 2" models RPZ, RPZE, RPZE II and RPDA

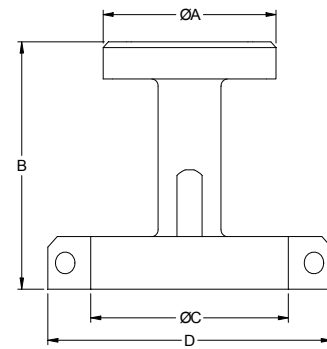
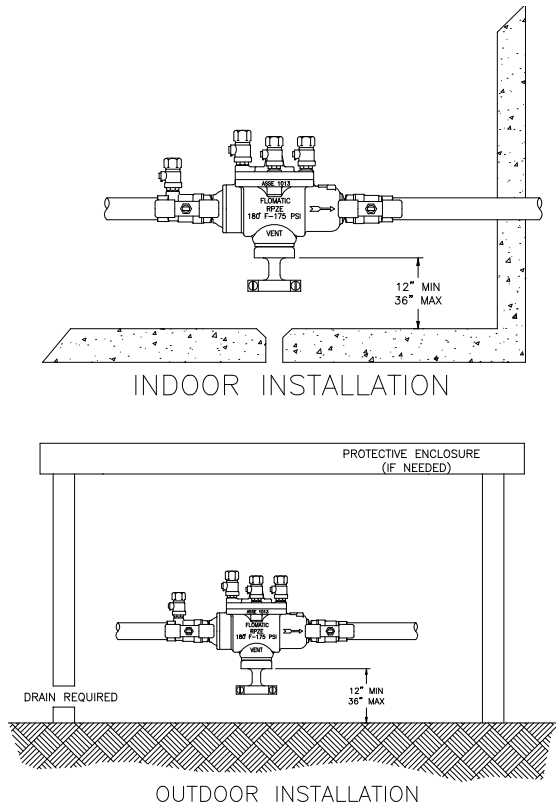
**TYPICAL INSTALLATION:**

Local codes shall govern installation requirements. To be installed in accordance with the manufacturers instructions.

**SUGGESTED DRAIN PIPE SIZE:**

8273599 – 1-1/4" Steel schedule 40 & 80  
              1-1/4" PVC schedule 40 & 80  
              1-1/2" Copper Type K

8273500 - 2" Steel schedule 40 & 80  
              2" PVC schedule 40 & 80  
              2-1/2" Copper Type K



Size		Part #	ØA		B		ØC Ref		D		Weight	
inch	mm		inch	mm	inch	mm	inch	mm	inch	mm	lbs	kg
1/2" - 3/4"	15 - 20	8273599	1-27/64	36	1-45/64	43	1-1/2	38	2-31/64	63	.1	.36
3/4" - 2"	20 - 50	8273500	2-11/64	55	2-25/32	71	2-1/2	64	3-35/64	91	.1	.45

**WARRANTY:** Flomatic valves are guaranteed against defects of materials or workmanship when used for the services recommended. If in any recommended service, a defect develops due to material or workmanship, and the device is returned, freight prepaid, to Flomatic Corporation within 12 months from the date of purchase, it will be repaired or replaced free of charge. Flomatic Corporations' liability shall be limited to our agreement to repair or replace the valve only.



**FEATURES:**

**Sizes:** □ 1/2" – 3/4"      □ 3/4" – 2"      □ 2 1/2" – 3"  
 □ 4" – 10"

**STANDARDS COMPLIANCE:**

- ANSI/ASME A112.1.2

**MATERIALS:**

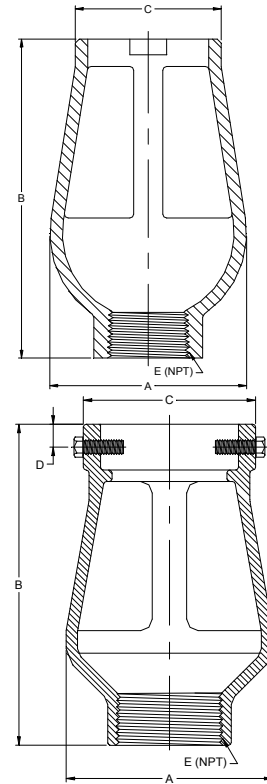
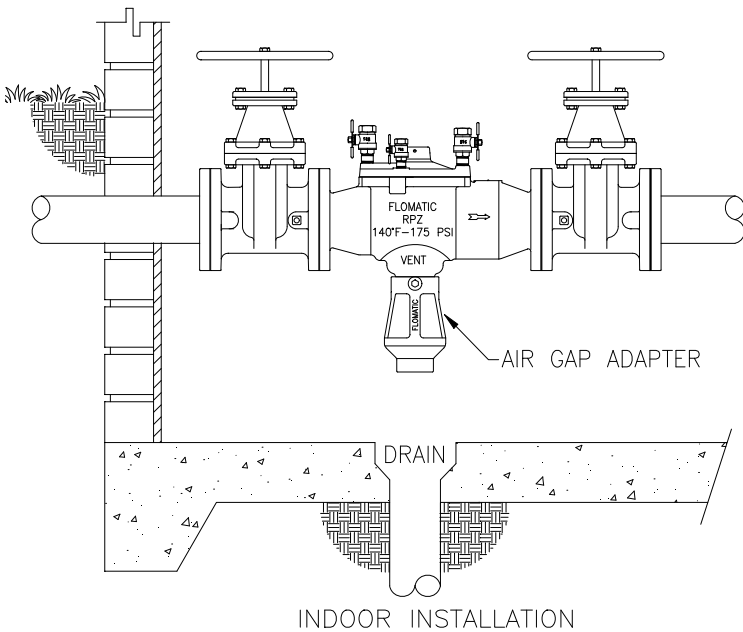
Body                                      Cast Iron ASTM A126 Class B  
 Fastners                                NSF Approved Epoxy Coating  
     Stainless Steel, 300 series

**APPLICATION:**

The Flomatic model AGA is designed for use with 1/2" thru 10" models RPZ, RPZE, RPZE II and RPDA

**TYPICAL INSTALLATION**

Local codes shall govern installation requirements. To be installed in accordance with the manufacturers instructions.



Size		Part #	ØA		B		ØC		D		E NPT	Weight	
inch	mm		inch	mm	inch	mm	inch	mm	inch	mm		lbs	kg
1/2" - 3/4"	15 - 20	8473599	2-9/16	70	3-5/8	92	1-3/4	44	n/a	n/a	1"	.8	.36
3/4" - 2"	20 - 50	8473500	3-11/64	81	5-1/8	130	2-3/8	60	n/a	n/a	1"	1	.45
2 1/2" & 3"	65 & 80	84735	4-1/2	114	7	178	3-1/2	89	1/2	13	2"	4	2
4" - 10"	100 - 250	84737	7-1/2	191	10-1/2	267	4-9/32	109	1/2	13	3"	15	7

**WARRANTY:** Flomatic valves are guaranteed against defects of materials or workmanship when used for the services recommended. If in any recommended service, a defect develops due to material or workmanship, and the device is returned, freight prepaid, to Flomatic Corporation within 12 months from the date of purchase, it will be repaired or replaced free of charge. Flomatic Corporations' liability shall be limited to our agreement to repair or replace the valve only.