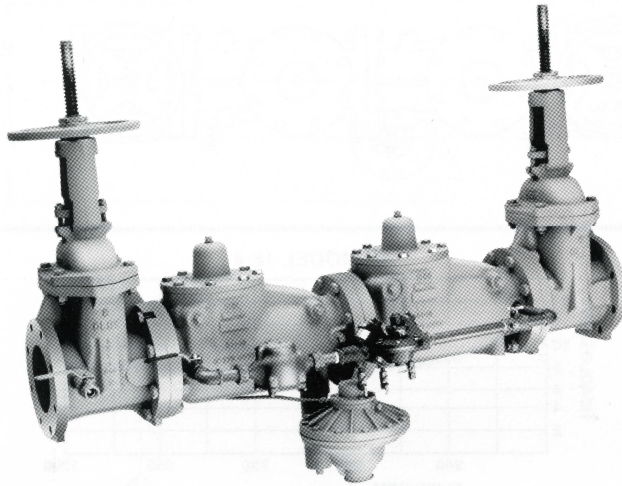




—MODEL— **18-4**

Reduced Pressure Principle Detector Check Backflow Preventer



- **Durable Construction, Low Head Loss**
- **Fire Service Backflow Protection**
- **Detects Sprinkler System Leaks**
- **Detects Unauthorized Usage**

The Cla-Val Model 18-4 utilizes the Cla-Val RP-4 that operates on the reduced pressure principle, which is an accepted method of safeguarding potable water supplies against the hazards of cross connection. All sizes comply with AWWA Standard C511-89.

It consists of two independent-acting toggle lever check valves, two shut-off valves, a differential relief valve, and four test cocks. The internal components are rugged with ample clearances to insure long trouble free operation, even in hard water and over prolonged periods of time. Field testing is easily performed by means of the test cocks.

The by-pass line utilizes a 3/4" Cla-Val RP-2 Reduced Pressure Principle Assembly and a water meter to record low flow usages. The water meter used is registration sensitive with a recording accuracy from 1/4 to 20 GPM. It is a magnetic drive type with low head loss.

Specifications

Sizes:

3", 4", 6", 8", 10"

End Detail:

125 lb. ANSI B16.1

Maximum Working Pressure:

175 psi

Hydrostatic Test Pressure:

350 psi

Max. Temperature:

to 110° F

Fluid:

Water

Material:

Main Body Valve and Cover:

Cast Iron ASTM A-126 interior epoxy coated*

Main Valve Trim:

Bronze ASTM B-61

Differential Relief Valve:

Bronze ASTM B-61 with Stainless Steel 316 Trim

Meter:

Magnetic Drive Type:

5/8" x 3/4" size for low flow registration 1/4 GPM to 20 GPM

Material: Bronze

(To comply with latest AWWA standards)

Shut-off Valves:

Main-Line:

Resilient Seat Outside Stem and Yoke Type

Epoxy Coated Interior and Exterior AWWA C550

By-pass line:

Bronze resilient seat ball type

*Exterior may be epoxy coated at extra cost.

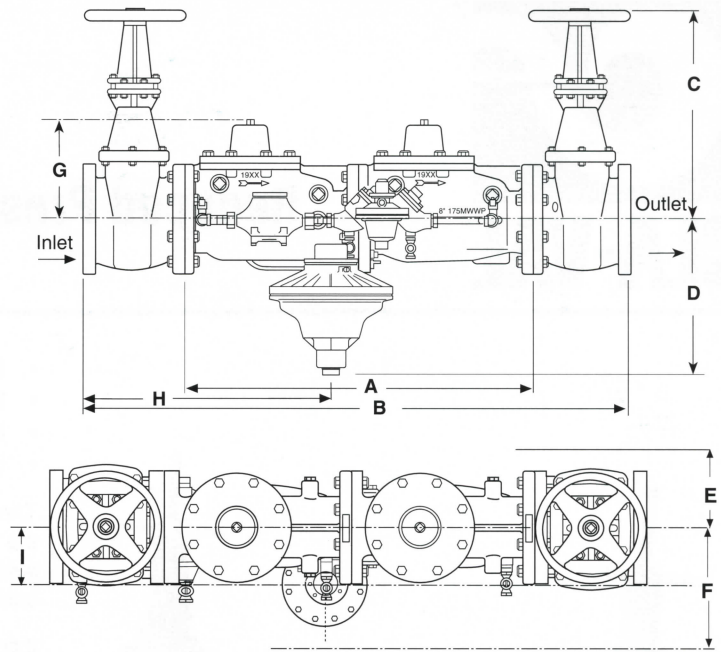
10" size is approved by the Foundation for Cross-Connection Control and Hydraulic Research at the University of Southern California.



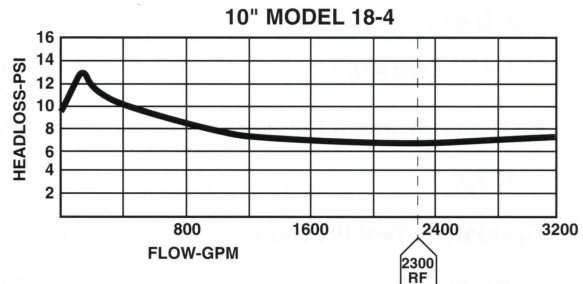
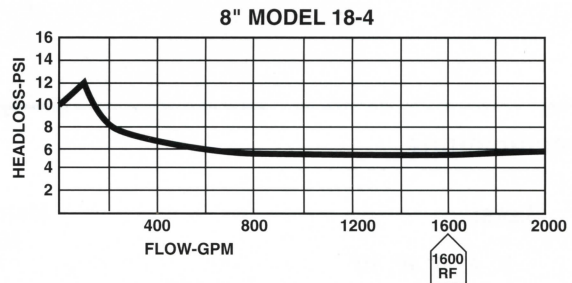
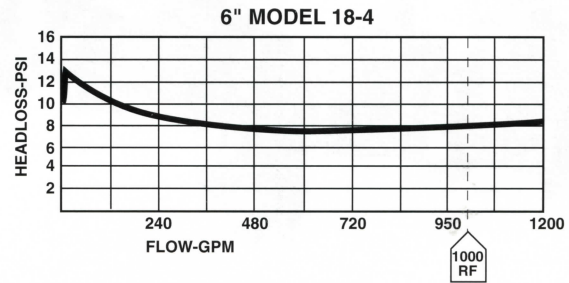
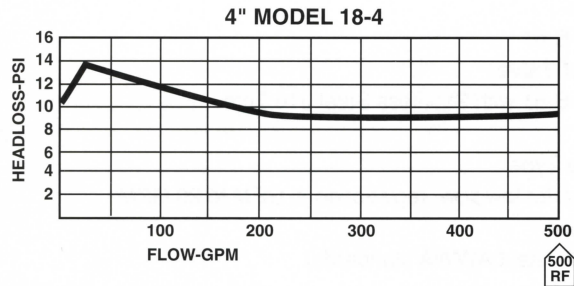
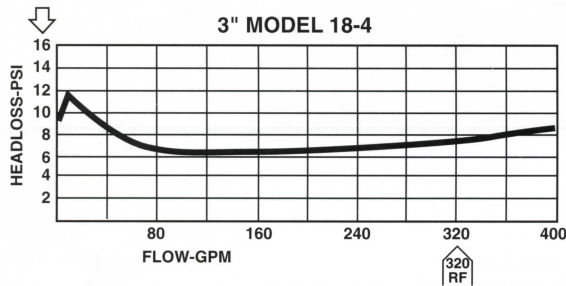
Dimensions (In Inches)

| Valve Size | 3" | 4" | 6" | 8" | 10" |
|------------|-------|-------|-------|-------|-------|
| A | 26.06 | 30.06 | 40.06 | 50.81 | 59.56 |
| B | 42.19 | 48.19 | 61.19 | 73.94 | 85.69 |
| C Max. | 18.87 | 22.75 | 30.13 | 37.75 | 45.75 |
| D | 9.44 | 12.56 | 13.56 | 14.75 | 17.06 |
| E | 4.50 | 5.00 | 6.00 | 8.00 | 10.00 |
| F | 14.75 | 15.38 | 16.94 | 18.44 | 22.44 |
| G | 7.25 | 8.31 | 11.00 | 13.00 | 15.75 |
| H | 18.56 | 20.56 | 26.81 | 32.94 | 38.31 |
| I | 7.70 | 9.00 | 9.00 | 9.00 | 9.00 |

It is recommended that this unit be installed in a horizontal position and that provisions for adequate drainage be made. Right hand mount of bypass assembly and relief valve is standard. Left hand mount is optional. Adequate space around assembly for maintenance work and testing is recommended.



Model 18-4 Reduced Pressure Principle Detector Check Backflow Preventer



10" model 18-4" Flow curve generated by the Foundation for Cross-Connection Control and Hydraulic Research at the University of Southern California.

"Rated Flow" Values adopted by the American Water Works Association and the New England Waterworks Association.



E18-4 (R10/95)

CLA-VAL CO.

P O Box 1325 Newport Beach CA 92659-0325
Phone: 714-722-4800 • Fax: 714-548-5441

CLA-VAL CANADA LTD.

4687 Christie Drive
Beamsville, Ontario
Canada LOR 1B4
Phone: 905-563-4963
Fax: 905-563-4040

CLA-VAL SA

Chemin des Mesanges 1
CH-1032 Romanel/
Lausanne, Switzerland
Phone: 41-21-643-15-55
Fax: 41-21-643-15-50

©COPYRIGHT CLA-VAL CO. 1992
Specifications subject to change without notice

Printed in USA

Represented By: