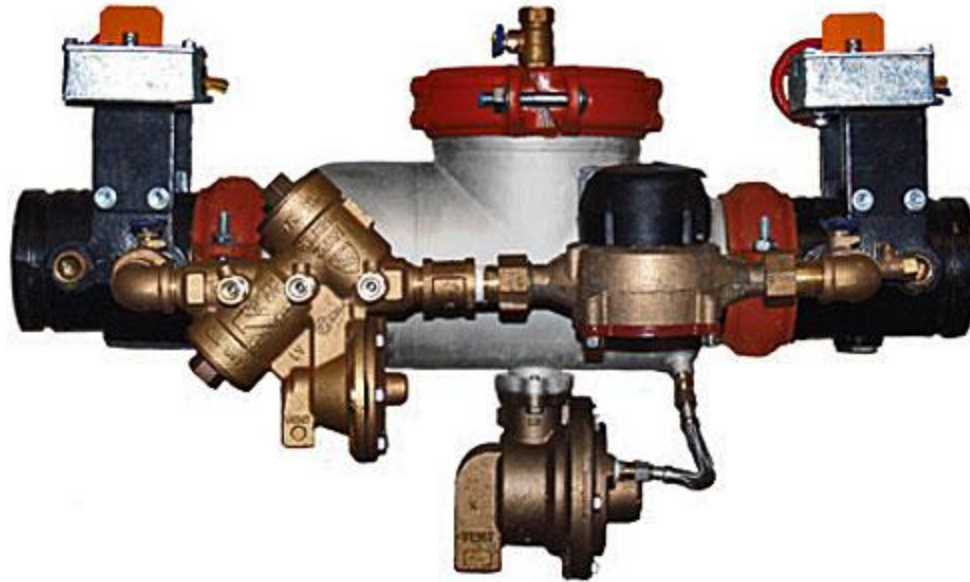


375ASTDA

2 1/2" - 10"



American Backflow
Products Company

WILKINS

a **ZURN** company

Modification Overview

The stainless steel (ST) series was introduced in 2011.

This version has a stainless steel body. *** (Parts do not interchange with original ductile iron version)

The 375ASTDA utilizes a $\frac{3}{4}$ " 975XLD as a bypass.

Single Access Cover Removal

Cover is secured by a grooved coupling.

Cover has no spring load.



American Backflow
Products Company

Check Valve Removal

Check valve module.

2 ½" - 6" checks are secured by retainers and o-ring sealed.

8" - 10" checks are bolted into body and o-ring sealed.

#1 check must be removed before #2 can be removed



#1 Check Valve Removal 2 ½" - 6"

Plastic Retainer –

There is one retainer securing the #1 check module.

Pinch together the exposed ends, push down, and then pull downstream.

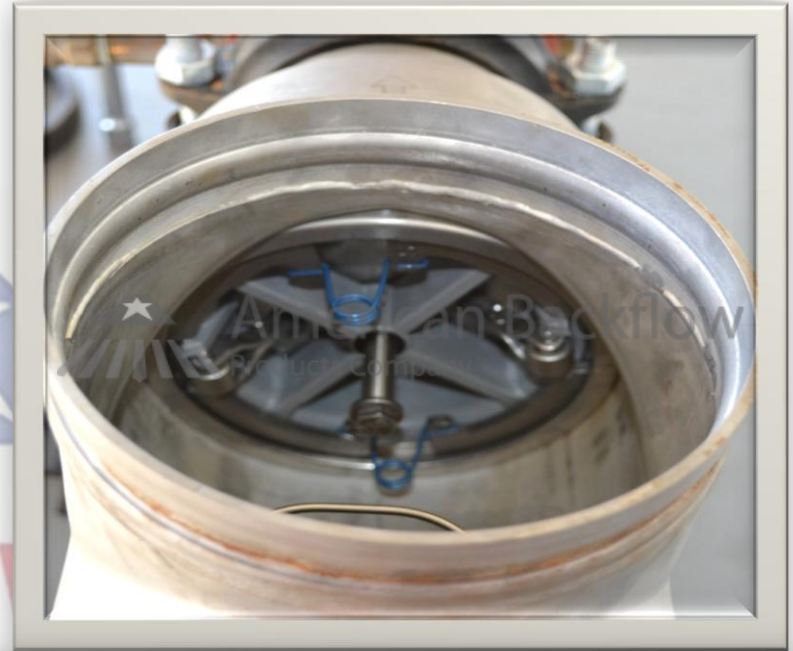


#2 Check Valve Removal 2 1/2" - 6"

Wire Retainers –

There are two separate spring loaded plate retainers that secure the #2 check module.

Pinch the sides of the spring together and rotate the plates out of the body groove, one side at a time.



Check Valve Removal 2 1/2" - 6"

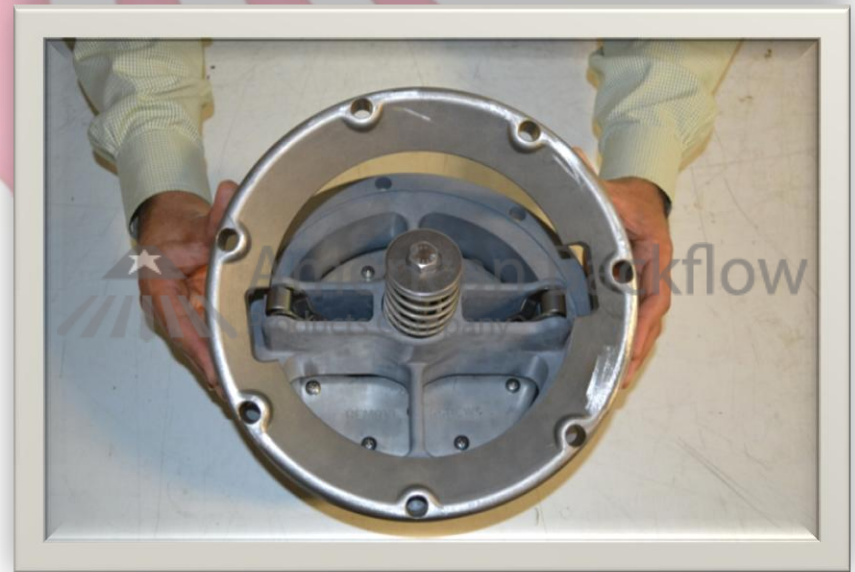
Once the retainer is removed the check module can be pulled straight out of the body.



Check Valve Removal 8" - 12"

#1 check – Remove the 4 nuts and washers.

#2 check – Remove the 7 nuts, washers and the check retaining ring.



Check Disc Replacement

Remove the bolts, washers, and o-rings on the back of the module.

** Do not remove any hardware from the spring side of module.

Separate the disc retainer from the module.



Check Seat Removal

The check seat is part of the check module and can not be removed.

If the seat is damaged, the complete check module will need to be replaced.



Check Valve Reassembly Notes

2 ½" - 6", Make sure the rollers on the check module are positioned at 3:00 and 9:00.

8 - 10", In the 12:00 and 6:00 position.

Install the check module into the body and close the test cock to hold check in place.



#1 Check Valve Reassembly 2 1/2" - 6"

Plastic Retainer

Install the plastic retainer by inserting one end into the body groove and then sliding your hand around the face of the retainer pushing it into the groove as you go.

The retainer will snap into place when it is fully seated.



#2 Check Valve Reassembly 2 1/2" - 6"

Wire Retainers -

Retainers are positioned at 12:00 and 6:00.

Install each retainer into the body groove one plate at a time.

Squeeze the spring ends together to clear the stops on the face of the seat.



RV Cover Removal

Cover is sealed by the diaphragm.

Remove sensing line.

Cover has a slight spring load.

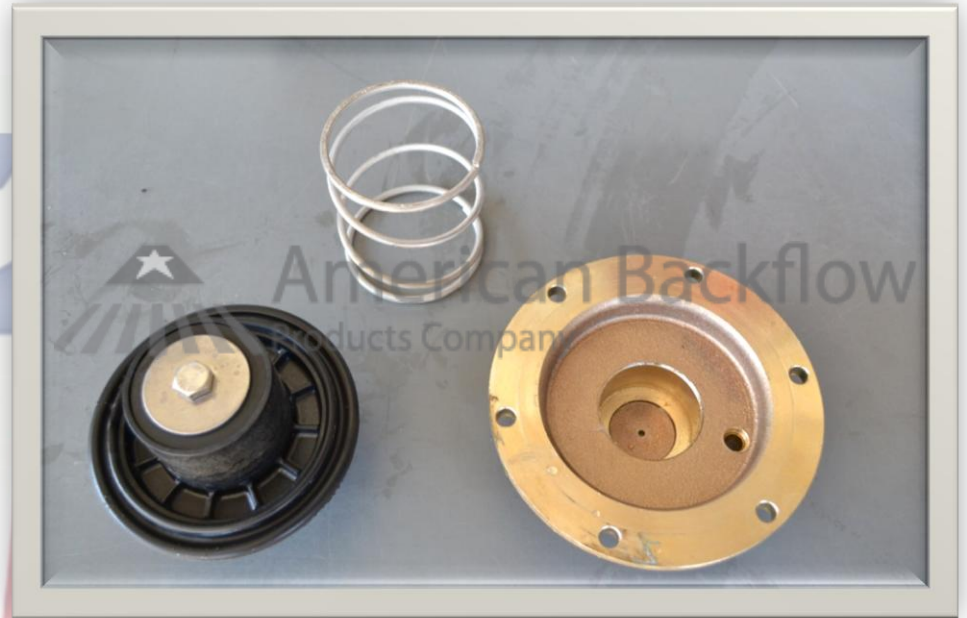
Hold cover firmly as the bolts are removed.



RV Stem Removal

Gently pull on diaphragm to remove the RV stem.

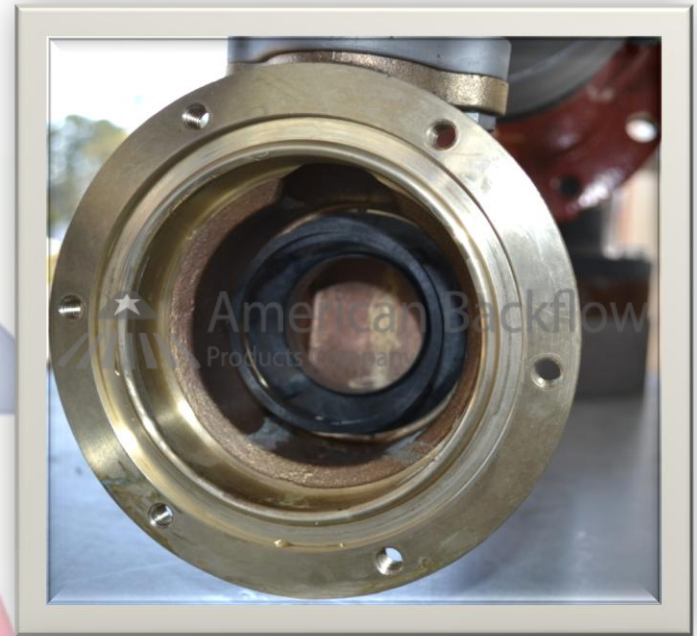
The spring should fall out when the stem is removed.



RV Seat Removal

The seat is pushed into the body and o-ring sealed.

Simply pull the seat straight out of the body.



RV Stem Disassembly

Remove the retaining bolt and pull apart.



American Backflow
Products Company

RV Rubber Replacement

The diaphragm and seat disc are free once the RV stem has been disassembled.

The bead and cup of the diaphragm should face toward the bolt end of the stem.

Reassemble stem in reverse order.



RV Reassembly Notes

Form the diaphragm to lay flat against the RV cover.

The bead on the diaphragm will line up with the groove on the RV body.

Replace and lubricate the plunger o-ring.

