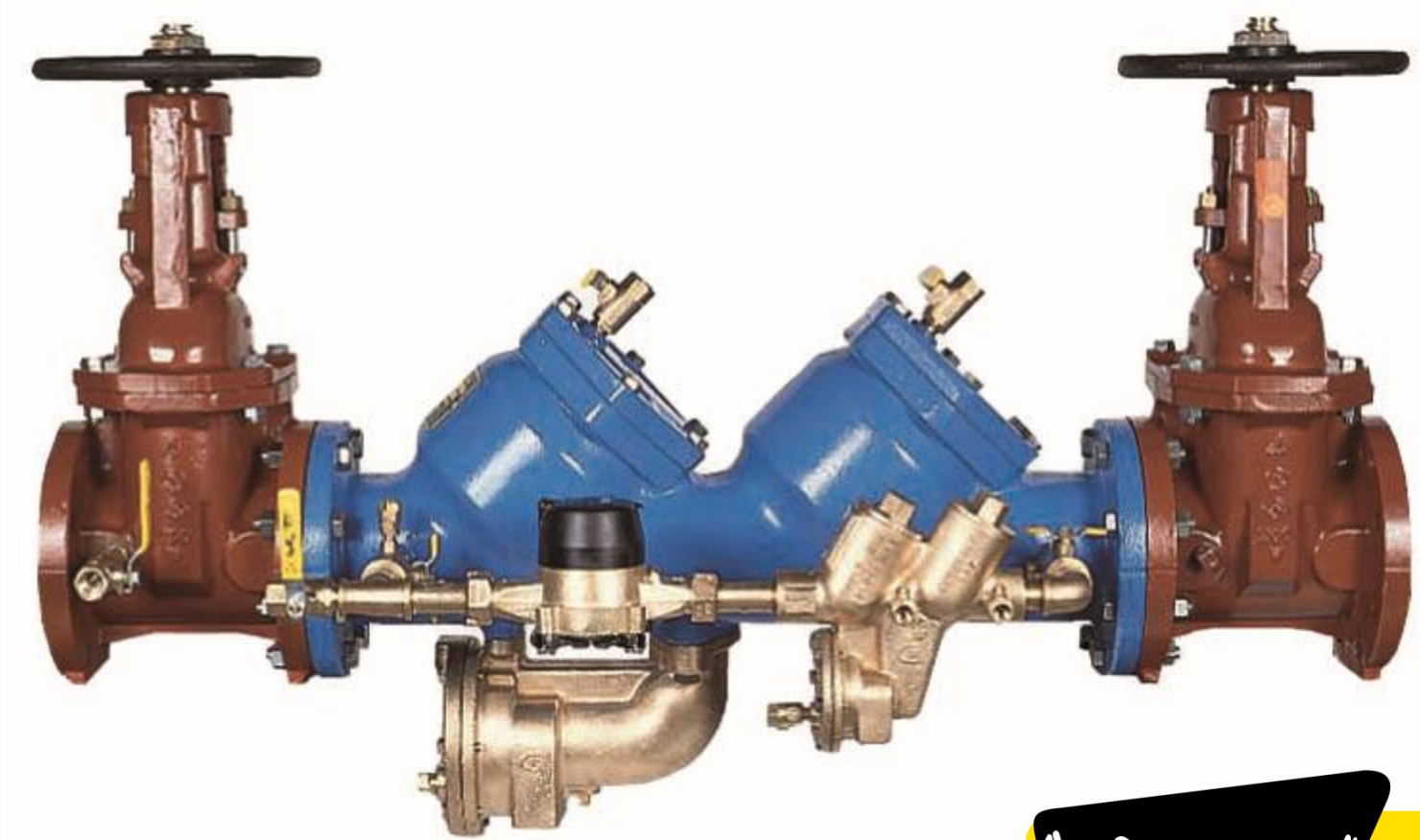


40-600
3" - 10"



American Backflow
Products Company



Modification Overview

Production of the 40 series began in 1992.

The 3" - 10" 40-600 was discontinued in 2003.

The 40-600 used a $\frac{3}{4}$ " 40-100 for the bypass assembly.

Check Cover Removal

Cover is o-ring sealed.

Loosen bolts $\frac{3}{8}$ ". Spring load is now released from the cover and retained by the check assembly.

Verify spring load before removing all the bolts.



Check Valve Removal

Center stem guided
check assembly.

Slide subassembly
straight out of seat
and body.



Check Seat Removal

3" - 8" sizes are threaded into the body and o-ring sealed.

A special tool is required to remove the seat.

10" size is bolted into the body and o-ring sealed.



Check Disc Replacement

3" - 6" remove the nut
and retaining plate.

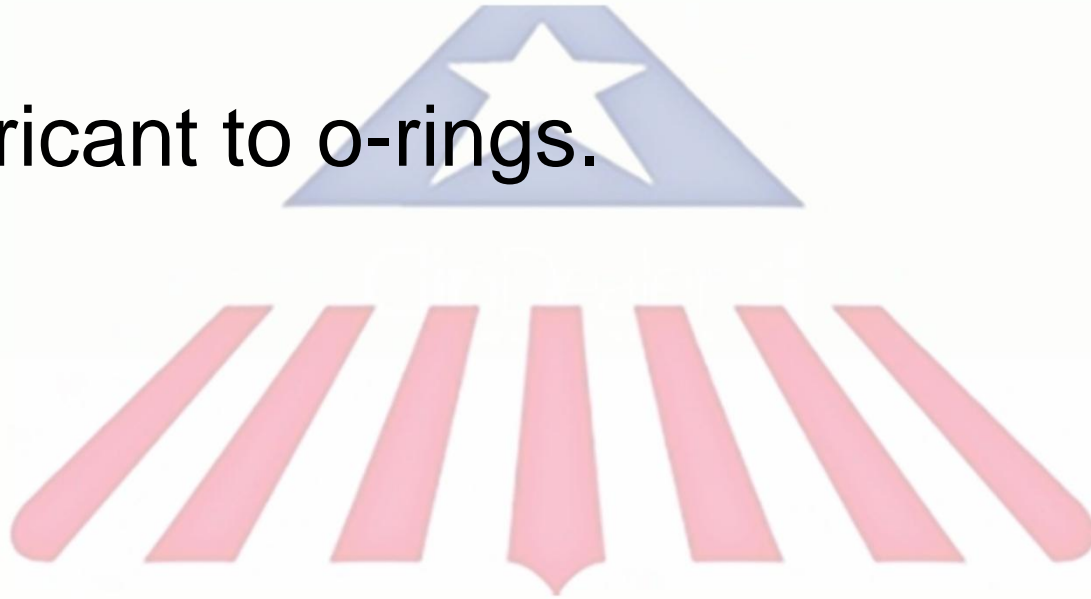
8" - 10" remove the
retaining plate bolts
and retaining plate.



Check Valve Reassembly Notes

Reassemble check valves in reverse order.

Apply lubricant to o-rings.



American Backflow
Products Company