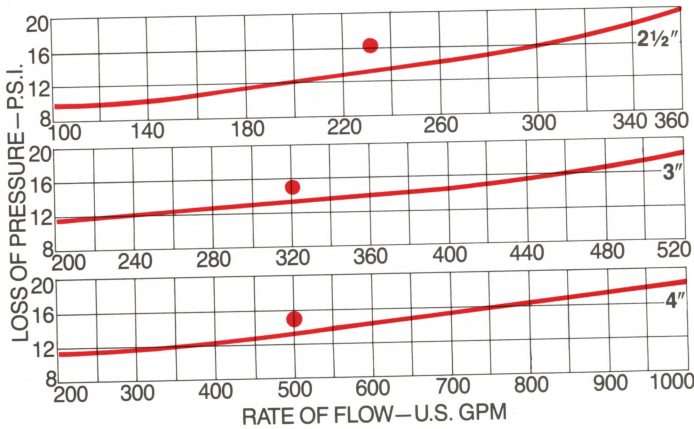
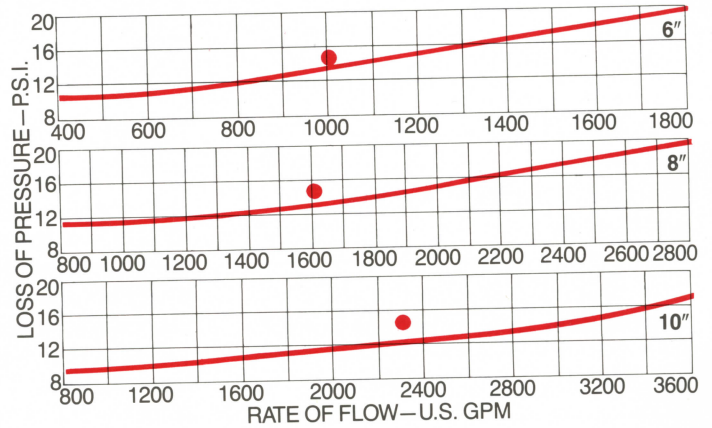


## PERFORMANCE (Performance curves are typical only and not a guarantee of performance)

### Head Loss – 2½", 3" and 4"



### Head Loss – 6", 8" and 10"



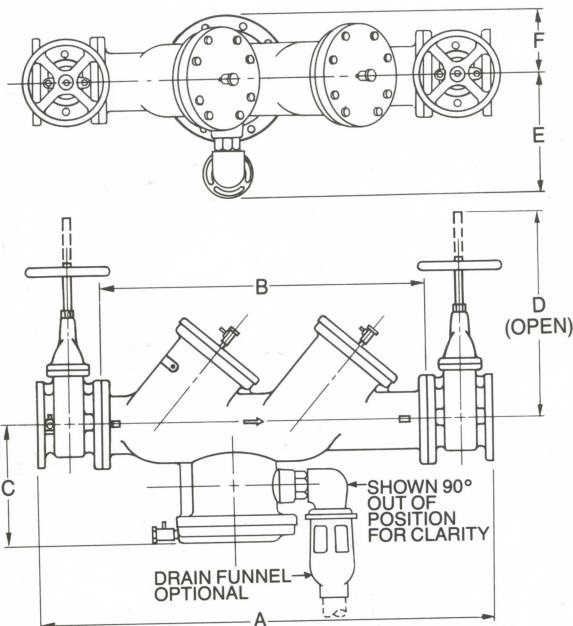
NOTE: ● Maximum Allowable Pressure Loss allowed by USC at indicated flow.

## DIMENSIONS

DIMENSIONS	2½"	3"	4"	6"	8"*	10"*
A (bronze)	35"	40"	46½"	62"	—	—
A (iron)	36½"	40"	47½"	62"	75½"	88"
B (bronze)	20"	24"	28½"	41"	—	—
B (iron)	21½"	24⅝"	29½"	41"	52½"	62"
C (bronze)	9¾"	10"	10¾"	12"	—	—
C (iron)	9⅓⅙"	10"	10¾"	12"	21¼"	22⅜"
D (NRS)	12½"	13⅝"	15¼"	19⅞"	24½"	29¾"
D (OS+Y**)	17¾"	22⅓"	25"	32¾"	41½"	48½"
E (bronze & iron)	10⅛"	10⅛"	10⅛"	10⅛"	17¾"	17¾"
F (bronze)	4½"	4½"	4¾"	6¾"	—	—
F (iron)	5¼"	5¼"	5¼"	6¾"	8¾"	10¾"
Size of Test Cocks	½"	½"	½"	¾"	¾"	¾"
Relief Valve Opening	2"	2"	2"	2"	3"	3"

\*8" and 10" available in cast iron only

\*\*OS+Y gate valve "D" dimension valve open.



## WEIGHTS

SIZE (BRONZE)	2½"	3"	4"	6"
Net Wt. No Valves, Lbs.	130	194	250	548
Net Wt. W/NRS Valves, Lbs.	258	330	430	788
Net Wt. W/OS+Y Valves, Lbs.	218	306	490	875
Gross Wt. No Valves, Lbs.	160	224	280	630
Gross Wt. W/NRS Valves, Lbs.	288	360	470	870
Gross Wt. W/OS+Y Valves, Lbs.	260	362	530	905

SIZE (IRON)	2½"	3"	4"	6"	8"	10"
Net Wt. No Valves, Lbs.	160	206	293	532	1266	1955
Net Wt. W/NRS Valves, Lbs.	264	330	476	874	1876	2769
Net Wt. W/OS+Y Valves, Lbs.	270	340	490	876	1926	2966
Gross Wt. No Valves, Lbs.	190	236	328	622	1370	2100
Gross W/NRS Valves, Lbs.	294	360	526	964	1980	3084
Gross W/OS+Y Valves, Lbs.	300	370	540	966	2030	3136

## MATERIALS AND SPECIFICATIONS

Body ..... hot-dipped galvanized or epoxy coated cast iron; 2½"-10"

Body ..... bronze; 2½"-6"

Working parts ..... bronze and stainless steel

Springs ..... stainless steel\*

Diaphragms ..... reinforced elastomer

Valve discs ..... silicone rubber

Maximum rated working pressure ..... 175 psi

Hydrostatic test pressure ..... 350 psi

Temperature range ..... 33°-140°F  
(Available up to 180°)

\*8" and 10" first check springs are carbon steel vinyl-coated.