

# 757, 757N, 757Z (2 1/2" - 10") 757A (2 1/2" - 6")



American Backflow  
Products Company



# Modification Overview

Production began in 2000 under the Hunter brand. In 2002 it was produced as the Watts 757 Series.

(a) suffix after the model number indicates the original version that contains a bi-link check valve. Discontinued in 2008.

The current version contains a tri-link check valve.

Repair steps are the same for both check models.

# Check Cover Removal 2 ½" - 6"

Cover slides back and is o-ring sealed.

Remove test cock # 3 from the body.

Insert a screwdriver through the hole on top of the cover sleeve.

Using both hands, rotate the cover ¼ turn clockwise and counter-clockwise to break o-ring seal.



# Check Cover Removal 2 ½" - 6"

Slowly slide the cover sleeve to the downstream side of the housing.

Once fully pulled back, turn the sleeve 90 degrees.



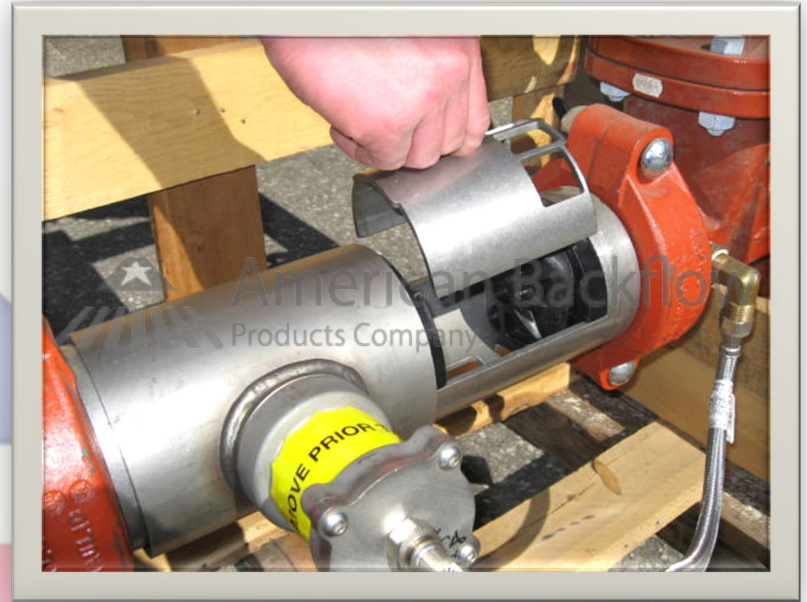
# Check Valve Removal 2 ½" - 6"

Check valve modules are o-ring sealed.

Remove the check retainer.

Remove check 1 first, then check 2.

Using a flat blade screwdriver, gently pry the module out of the body.

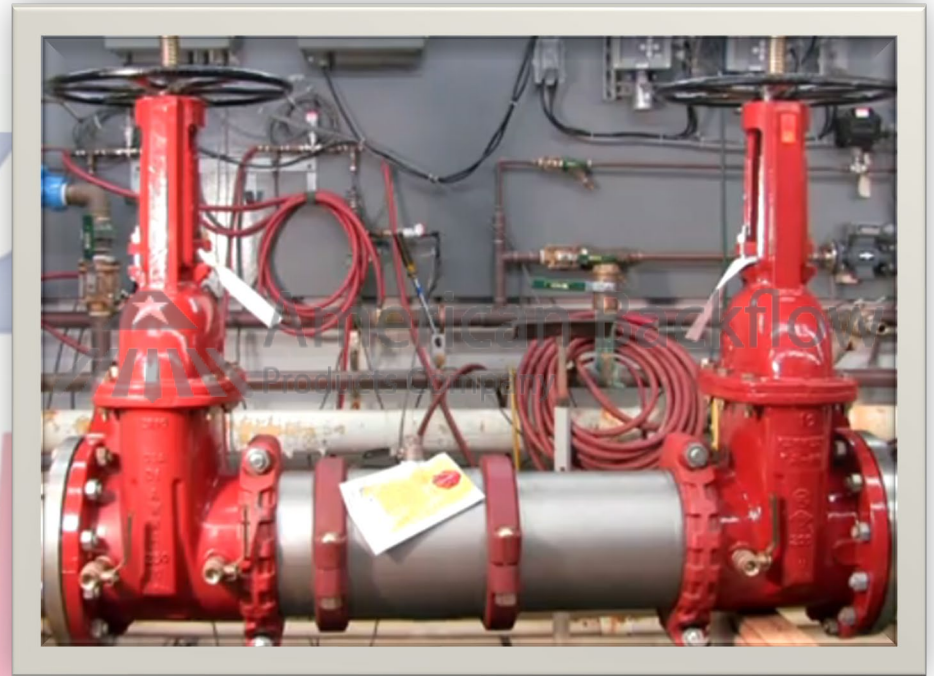


# Check Cover Removal 8" - 10"

For the 8-10" sizes,  
remove both Victaulic  
couplers.

Remove test cock # 3  
from the body.

Slide the cover  
downstream.



# Check Valve Removal 8" - 10"

Modules are o-ring sealed.

Remove the 3 check retainers.

Remove check 1 first, then check 2.

Using a flat blade screwdriver, gently pry the module out of the body.



**American Backflow**  
Products Company

# Check Seat Removal

The check seat is part of the module.

If seat is damaged, the entire module will have to be replaced.



# Check Disc Replacement 2 1/2" - 4"

The check modules are spring loaded.

Insert a screwdriver through the hole in the linkage and let it rest in the arbors on the module.

Remove the "E"-clip and pin connecting the linkage.

The clapper will open with no tension.

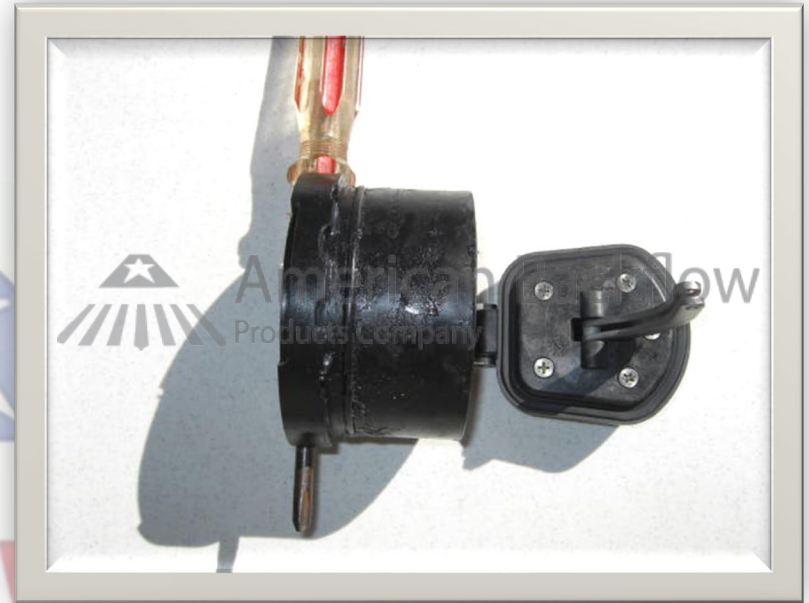


# Check Disc Replacement 2 1/2" - 4"

Remove the screws  
on the disc retainer.

Once disc is replaced,  
reassemble in reverse  
order.

Do not remove the  
spring assembly.



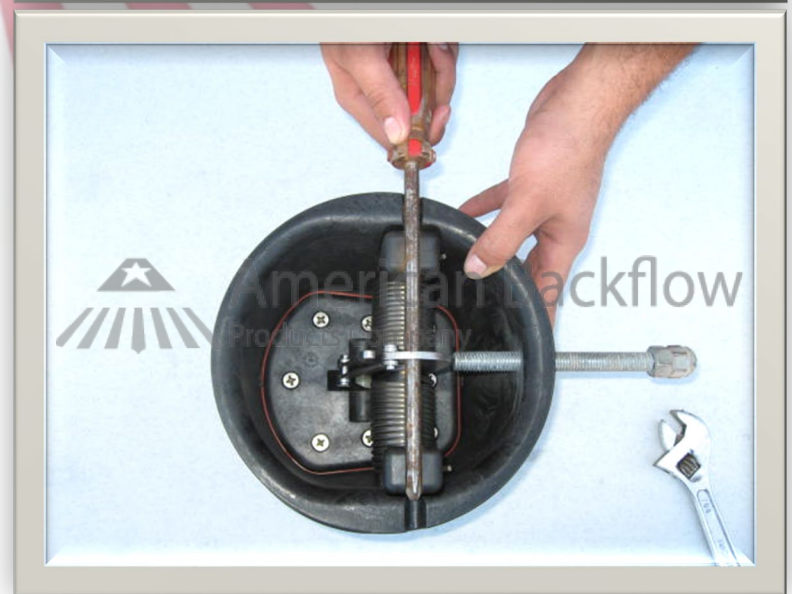
# Check Disc Replacement 6" - 10"

Locate the service hole on the side of the check module.

Use a 1/2"-13 x 5 fully threaded bolt.

Thread the bolt until the hole in the linkage is aligned with the notches in the spring arbors.

Insert a long phillips screwdriver through the hole and arbors.



# Check Disc Replacement 6"-10"

- Back the bolt out until the spring tension is transferred to the screwdriver.
- Remove retaining clip and pin from linkage.
- Do not remove spring assembly from the module.
- Remove screws from disc retainer.



# Check Valve Reassembly Notes

Reassemble check valves in reverse order.

Apply lubricant to o-rings.

Replace check 2 first, then check 1.

