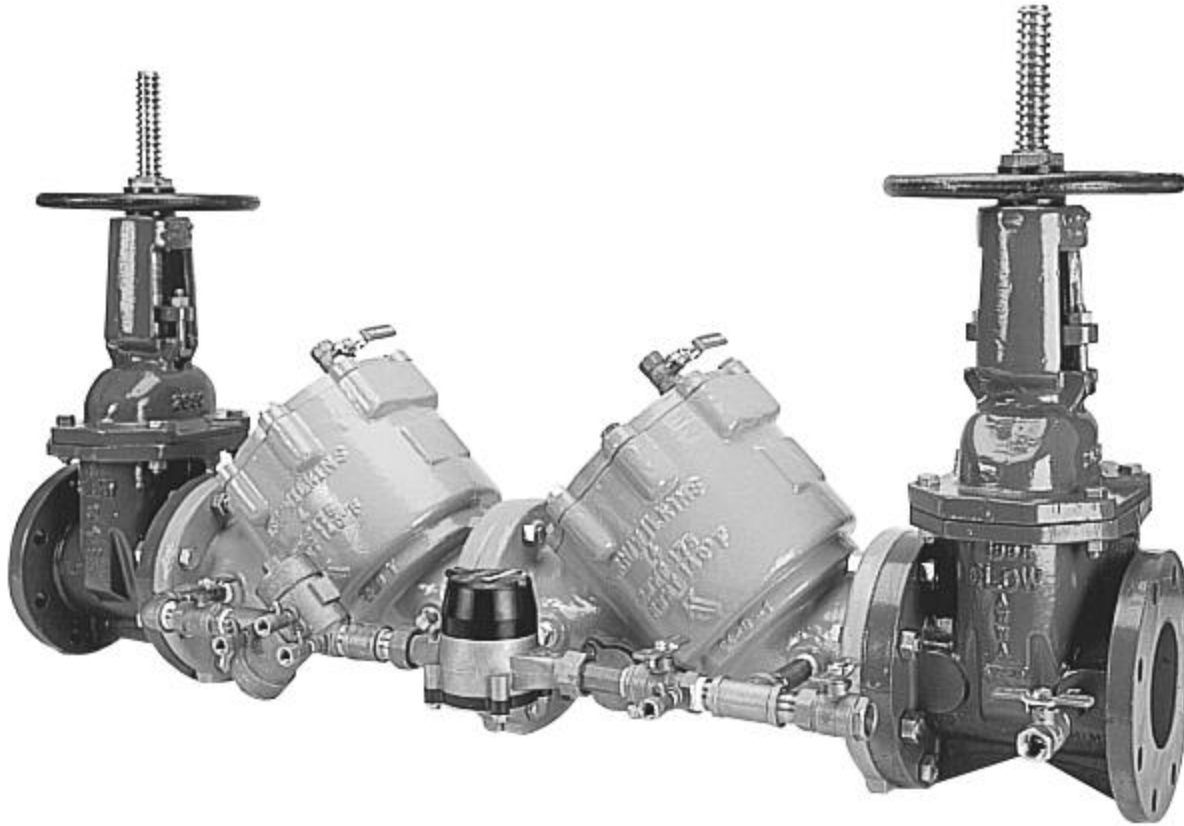


950DA

2½" - 10"



American Backflow
Products Company

WILKINS
a **ZURN** company

Modification Overview

Production of the 950DA began in 1991 and was discontinued in 2004.

The 950DA uses a $\frac{3}{4}$ " 950XL for the bypass assembly.

Check Cover Removal

Cover is o-ring sealed.

Loosen bolts $\frac{1}{2}$ ". The spring load is now released from the cover and retained by the check subassembly.

** Verify spring load before removing all the bolts.



Check Valve Removal

Center stem guided
check assembly.

Disc & spring
subassembly.

Slide subassembly
straight out of seat
and body.

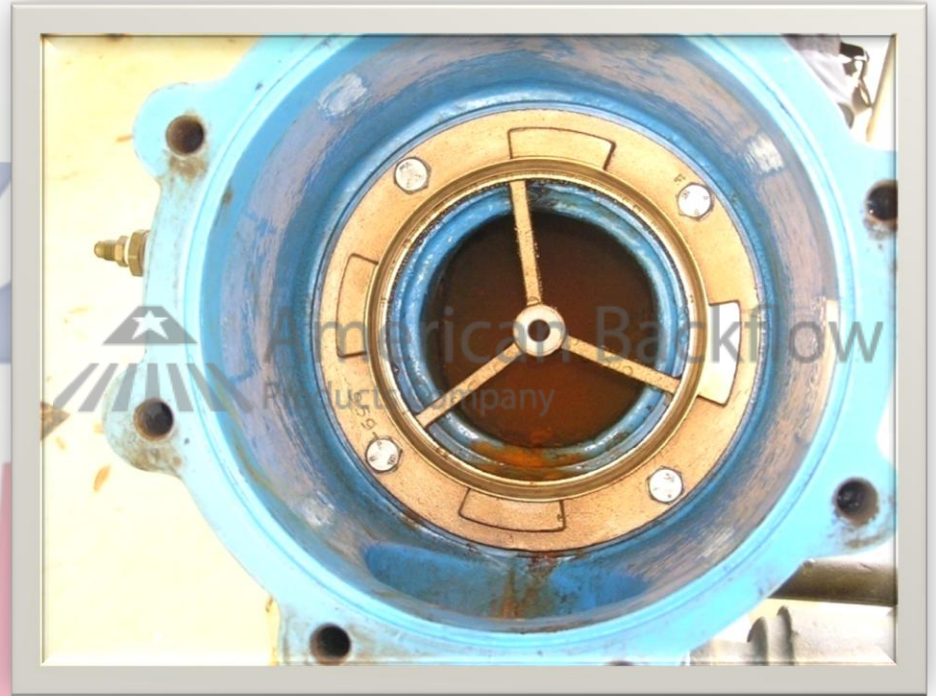


Check Seat Removal

Seats are bolted into the body and o-ring sealed.

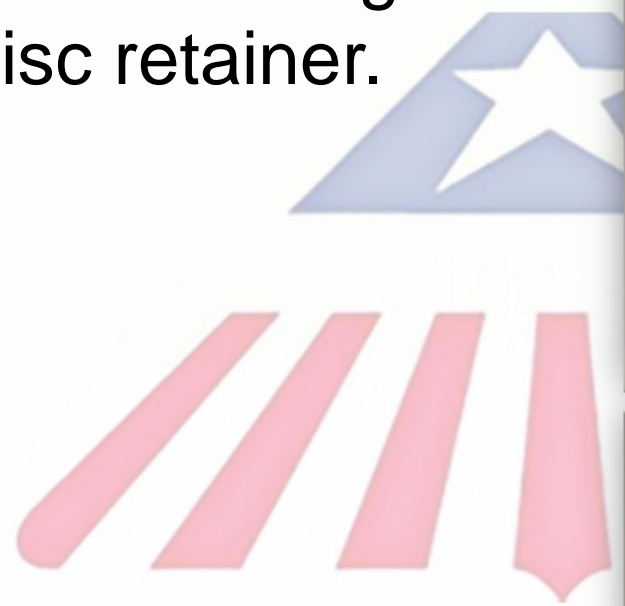
Remove the bolts and pull the seat straight out of the body.

4"-10" - Inspect plastic guide bushing in center of seat.



Check Disc Replacement

Remove retaining nut
and disc retainer.



Check Valve Reassembly Notes

Reassemble checks
in reverse order.

Lubricate o-rings.



American Backflow
Products Company