

# MODEL DCDA

Double Check  
Detector Assemblies  
Sizes 2 1/2", 3", 4" & 6"

# WILKINS



## APPLICATION

The WILKINS Model DCDA Backflow Preventer has been designed for installation in potable water lines where a potential health hazard does not exist.

WILKINS' low head loss makes the device most suitable where system pressures are low or where it is important to hold pressure loss to a minimum.

## FEATURES

### LOW HEAD LOSS

Lowest in the industry

### LOW MAINTENANCE COSTS

No special tools required to service units

### COMPACT SIZE

Easy to install

### MODULAR DESIGN

Unitized spring assembly for safety  
One piece sleeve and seat

### EPOXY COATED MAINCASE

Fusion coated inside and outside  
Corrosion resistant (FDA Approved)

## PERFORMANCE

WILKINS Model DCDA Backflow Preventer meets or exceeds the requirements for flow rates and head loss of FCCCHR at U.S.C., and U.L.

Consult your local WILKINS representative or factory for other state, county, or city acceptances.



\*U.L. listed backflow preventers must include OS&Y Gate Valves.

## NOTICE

Proper performance is dependent upon the user adhering to recommended installation procedures, and by having licensed, qualified personnel perform regular, periodic inspection and maintenance. For proper installation, consult WILKINS' installation and maintenance manual, and prevailing governmental and local codes.

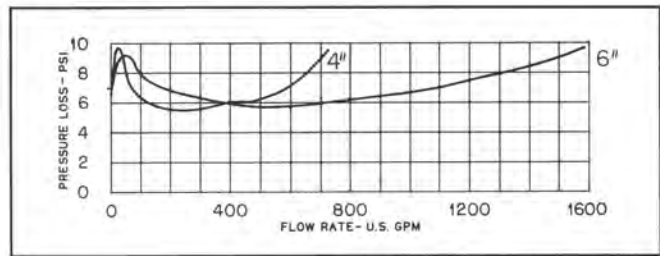
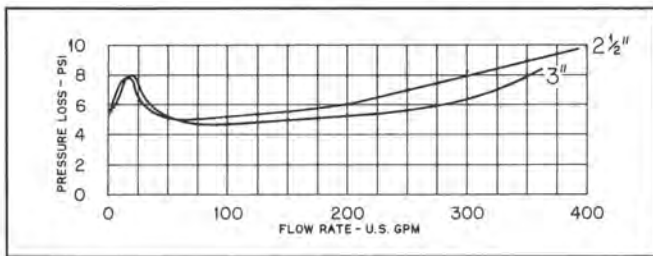
Two resilient wedge shut-off valves and four test cocks are provided for testing and maintenance. All WILKINS Model DCDA Backflow Preventers can be disassembled and repaired without removing the device from the line.

Damage to the device could result wherever water hammer and/or thermal expansion could cause excessive line pressure. Where this could occur, shock arresters and/or pressure relief valves should be installed downstream of the device.

## WARRANTY

WILKINS' Backflow Preventers are warranted against defects in material and workmanship for a period of one year from date of shipment strictly in accordance with WILKINS' Certificate of Limited Warranty.

## SPECIFICATIONS FLOW CHARACTERISTICS



### PURPOSE

The WILKINS Model DCDA Backflow Preventer prevents contamination of the potable water supply by backflow from fire protection systems, and detects costly leaks or unauthorized water usage.

The by-pass line assembly consists of a water meter in series with a WILKINS Model 550 Double Check Backflow Preventer.

### MATERIALS

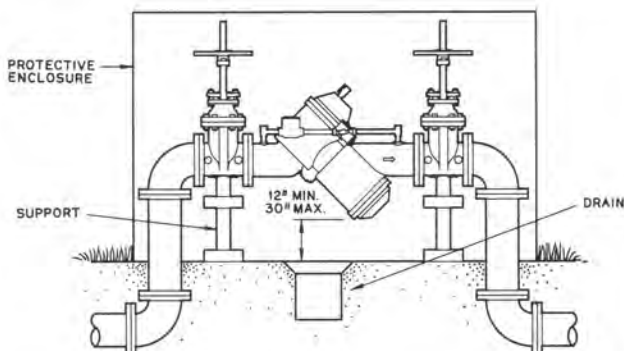
- All corrosion resistant
- Epoxy coated (FDA Approved) cast iron maincase inside and outside
- Brass poppet type check valves - unitized spring assembly, independently operated.
- Stainless steel springs
- One piece brass sleeve and seat, easy to remove.
- By-pass unit consists of cast bronze maincase

### PRESSURE-TEMPERATURE

Suitable for supply pressure up to 150 PSI and water temperatures from 33°F to 110°F.

### TYPICAL INSTALLATION

- Install with minimum clearance of 12" from floor or grade.
- Install with adequate side clearance for testing and maintenance.
- Protect from freezing.
- Install adequate support blocks.
- If installed in pit or vault consult local codes; provide adequate drainage.

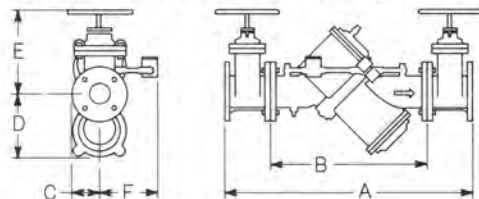


### OPTIONS

Suffix (options can be combined)

- FS - with flanged strainer
- FSC - with epoxy coated flanged strainer
- ROS&Y - with resilient wedge OS&Y shut-off valves
- L - less shut-off valves

### DIMENSIONS & WEIGHTS



S I Z E	DIMENSIONS (INCHES)								WEIGHT (LBS.)		
	A	B	C	D	F	OS&Y			NRS	OS&Y	LESS GATES
						NRS	OPEN	CLS'D			
2 1/2	35	20	3.5	7.75	8.25	9.25	14	11.75	164.3	240.5	104.1
3	36	20	3.75	7.75	8.25	10.25	23.5	18	187.7	253.7	104.1
4	46	28	4.5	10.5	8.25	12.5	23.5	19	362.7	464.9	236.1
6	57	36	5.5	15	8.25	16.75	30	24	791.7	950.1	576.1



a step ahead of tomorrow

- PRESSURE REDUCING VALVES • BACKFLOW PREVENTERS
- TEMPERATURE AND/OR PRESSURE RELIEF VALVES
- BALL VALVES • IRRIGATION VALVES • DIELECTRIC UNIONS
- "Y" STRAINERS

**PERFORMANCE UNDER PRESSURE**

## WILKINS DIVISION

1747 Commerce Way, Paso Robles, CA 93446-3696  
PHONE: 805/238-7100 FAX: 805/238-5766