

Field Test Procedure for 3 Valve Test on an ASSE 1013 (RP)

Flush Test Cocks (TC)

- Step #1: Install test adapters (if applicable)
- Step #2: Open TC #4 - let trickle
- Step #3: Open TC #1 - close
- Step #4: Open TC #2 - close
- Step #5: Open TC #3 - close
- Step #6: Close TC #4

Attach Test Kit

- Step #1: Close high and low valves and open bypass valve on test kit
- Step #2: Attach high hose to TC #2
- Step #3: Attach low hose to TC #3
- Step #4: Open TC #2
- Step #5: Open high valve - bleed air - close
- Step #6: Open TC #3
- Step #7: Open low valve - bleed air - close
- Step #8: Attach bypass hose to TC #4
- Step #9: Open low valve
- Step #10: Loosen bypass hose at TC #4 - bleed air - tighten
- Step #11: Close low valve
- Step #12: Open high valve

Test #1 -Tightness of the #2 Shutoff Valve

- Step #1: Close #2 shutoff valve
- Step #2: Open TC #4
- Step #3: Close TC #2
- Step #4: Read differential gauge

Test Results: If the differential gauge reading remains steady, record #2 shutoff valve as tight.

Test #2 - #2 Check with Backpressure Test

If the differential gauge reading remains steady in Test #1, record #2 check valve as tight.

Test #3 - #1 Check Differential

- Step #1: Close TC #4
- Step #2: Close high valve
- Step #3: Remove bypass hose from TC #4
- Step #4: Open TC #2
- Step #5: Open low valve to cause differential gauge reading to increase
- Step #6: Close low valve

Test Results: Record gauge value. Record the pressure differential across #1 check valve. If the differential gauge reading is 5 psid or above, record #1 check valve as tight.

Test #4 - Relief Valve Opening

- Step #1: Close bypass valve
- Step #2: Open high valve
- Step #3: Slowly open low valve

Test Results: Record relief valve psid opening point. The relief valve must drip when the differential gauge reading is 2 psid or above.

Restore System

- Step #1: Close all TCs
- Step #2: Remove hoses
- Step #3: Open all valves on test kit to drain water
- Step #4: Restore #2 shutoff valve to pre-test condition

The tester shall provide copies of the test results to the owner and other appropriate parties as required.

NOTES:

Field Test Procedure for 5 Valve Test on an ASSE 1013 (RP)

Flush Test Cocks (TC)

- Step #1: Install test adapters (if applicable)
- Step #2: Open TC #4 - let trickle
- Step #3: Open TC #1 - close
- Step #4: Open TC #2 - close
- Step #5: Open TC #3 - close
- Step #6: Close TC #4

Attach Test Kit

- Step #1: Close high, low and bypass valves and high and low bleed valves on test kit
- Step #2: Attach high hose to TC #2
- Step #3: Attach low hose to TC #3
- Step #4: Open TC #2
- Step #5: Open high bleed valve - bleed air - close
- Step #6: Open TC #3
- Step #7: Open low bleed valve - bleed air - close
- Step #8: Attach bypass hose to TC #4
- Step #9: Open high valve
- Step #10: Open bypass valve
- Step #11: Loosen bypass hose at TC #4 - bleed air - tighten
- Step #12: Slowly open low bleed valve to cause differential gauge reading to rise - close

Test #1 – Tightness of the #2 Shutoff Valve

- Step #1: Close # 2 shutoff valve
- Step #2: Open TC #4
- Step #3: Close TC #2
- Step #4: Read differential gauge

Test Results: If the differential gauge reading remains steady, record #2 shutoff valve as tight.

Test #2 - #2 Check with Backpressure Test

If the differential gauge reading remains steady in Test #1, record #2 check valve as tight.

Test #3 - #1 Check Differential

- Step #1: Close bypass valve
- Step #2: Open TC #2
- Step #3: Open low bleed valve to cause reading to increase
- Step #4: Close low bleed valve

Test Results: Record gauge value. Record the pressure differential across #1 check valve. If the differential gauge reading is 5 psid or above, record #1 check valve as tight.

Test #4 - Relief Valve Opening

- Step #1: Slowly open low valve

Test Results: The relief valve must drip when the differential gauge reading is 2 psid or above.

Restore System

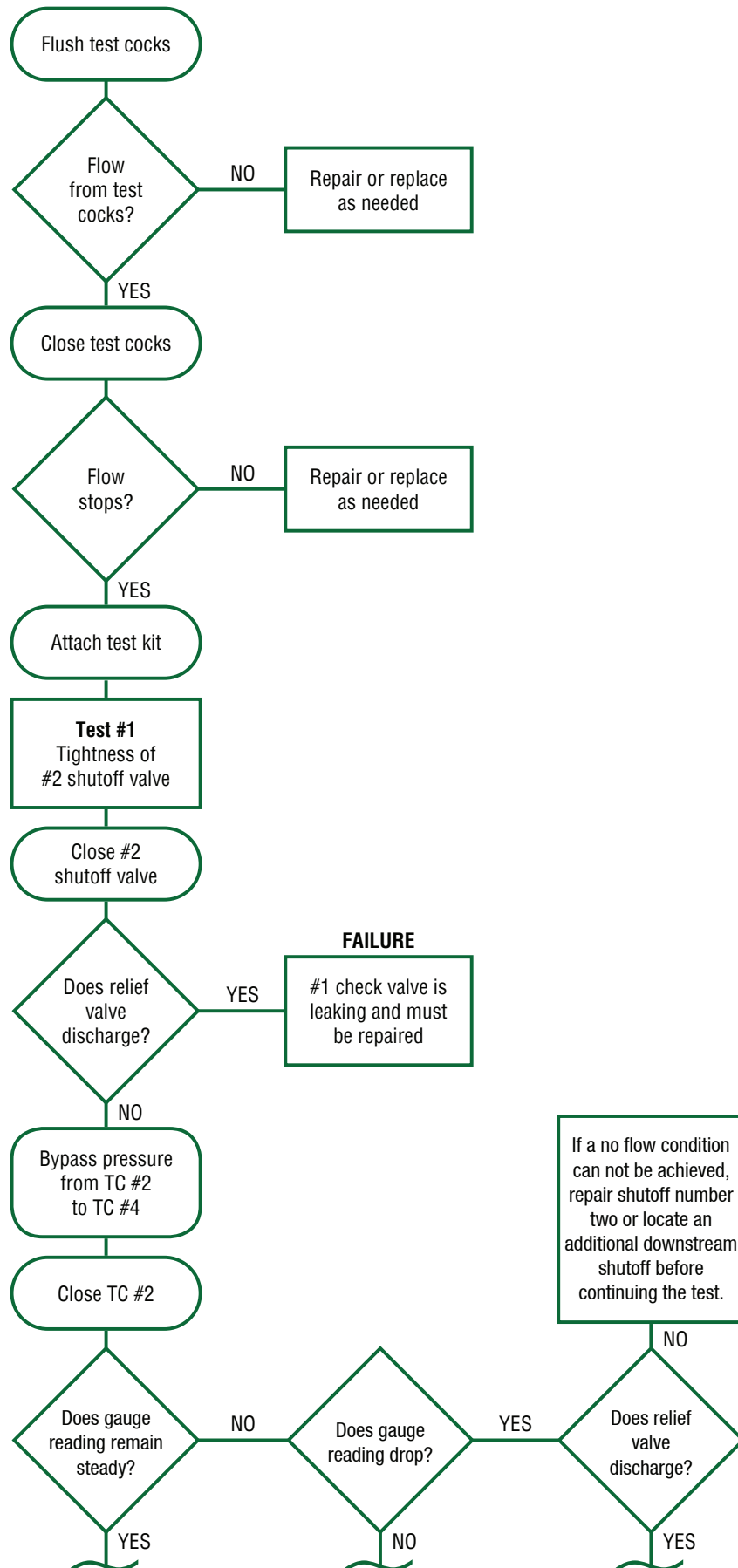
- Step #1: Close all TCs
- Step #2: Remove hoses
- Step #3: Open all valves on test kit to drain water
- Step #4: Restore #2 shutoff valve to pre-test condition

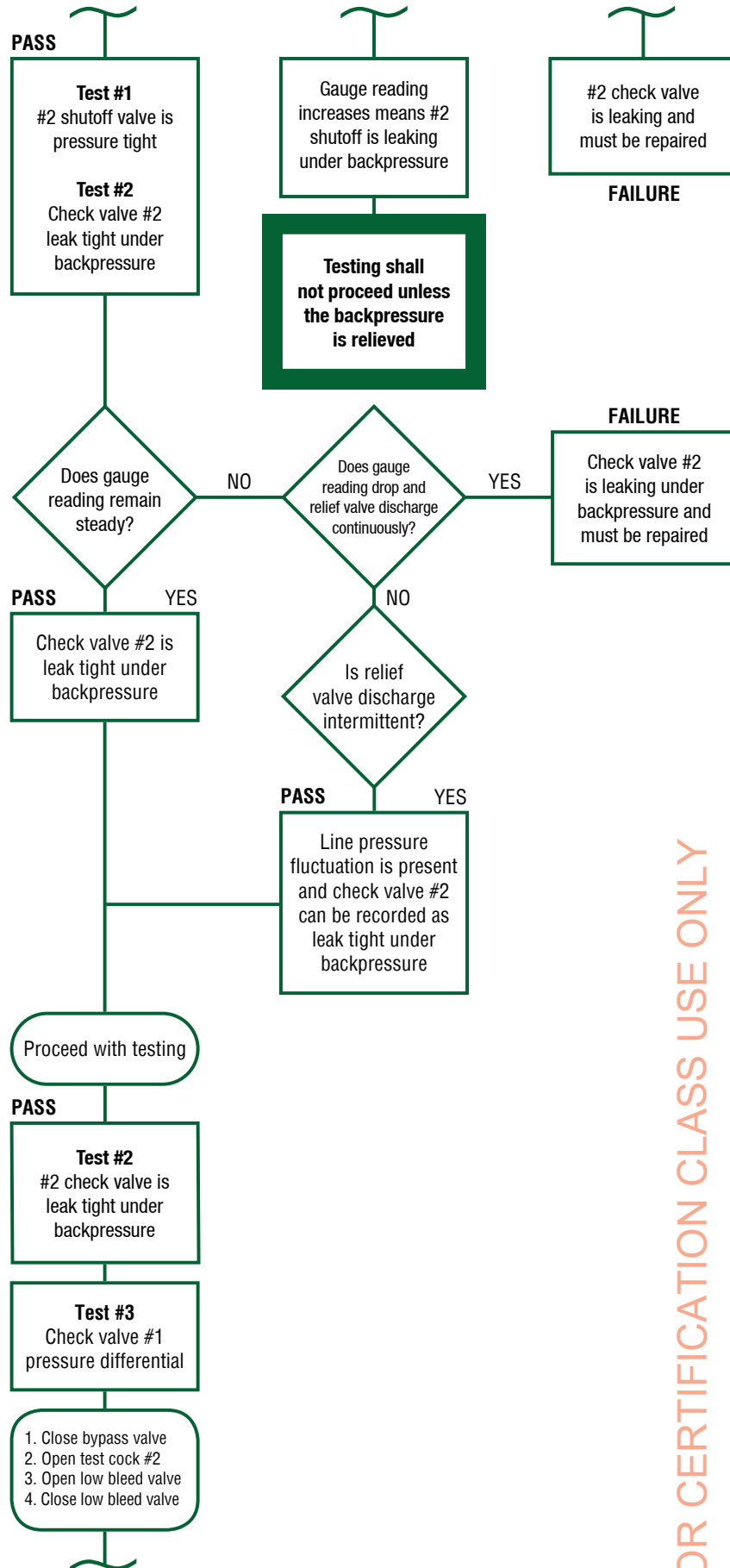
The tester shall provide copies of the test results to the owner and other appropriate parties as required.

NOTES:

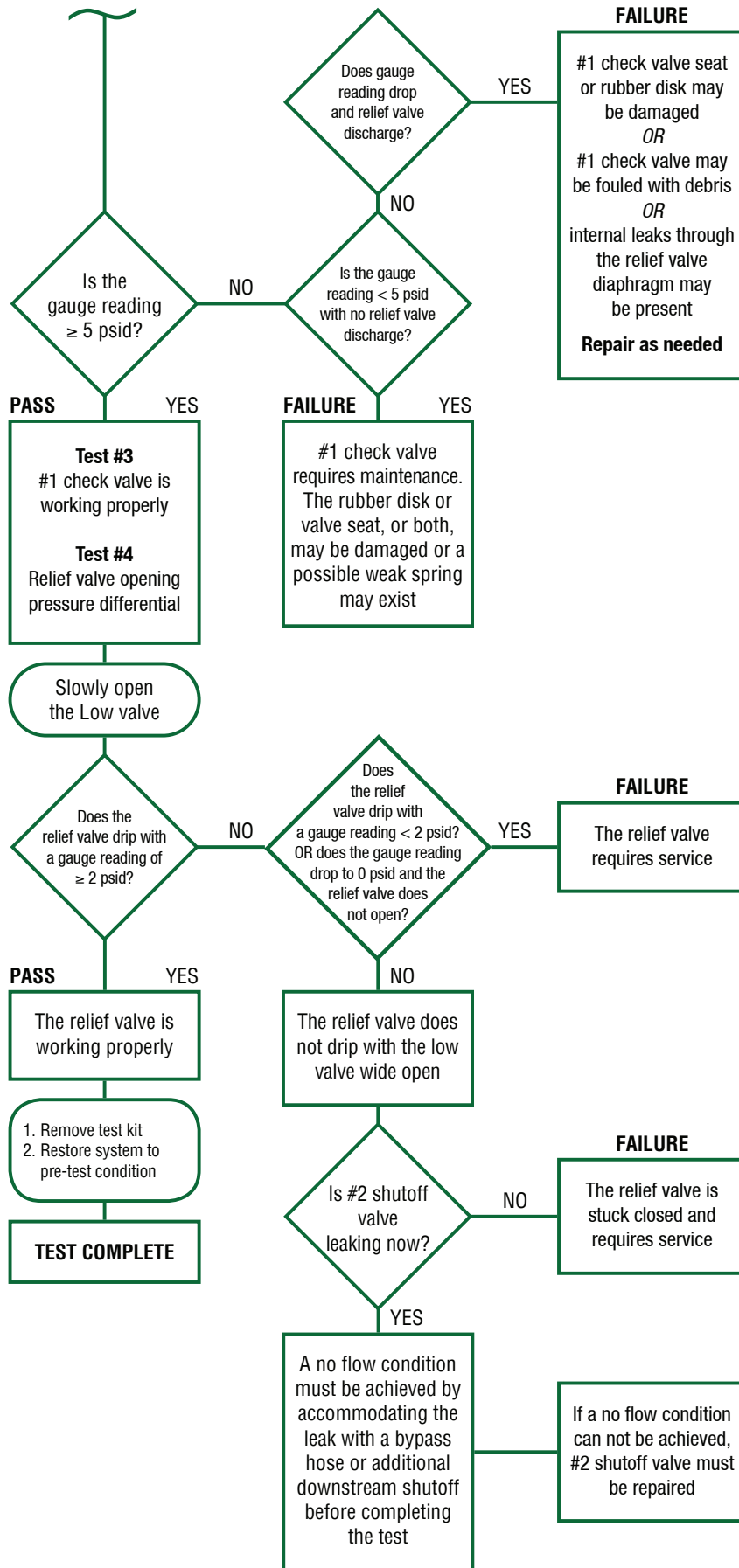
FOR CERTIFICATION CLASS USE ONLY

Trouble-Shooting Flow Chart for ASSE 1013 (RP) Assemblies





FOR CERTIFICATION CLASS USE ONLY



Trouble-Shooting Guide for ASSE 1013 (RP) Assemblies

Test #1 – Tightness of #2 Shutoff Valve

If the gauge reading rises during this test, it is an indication you have a leaking #2 shutoff valve and there is backpressure on the #2 shut off valve.

If the needle decreases and there is no discharge from the relief vent, it is an indication you have a leaky #2 shutoff valve.

If the needle decreases and there is a discharge from the relief vent, it's an indication you have a leaky #2 check.

If it is determined there is backpressure, it must be relieved before any testing can be done.

If it is determined that #2 shutoff is leaking and there is no backpressure present, the testing may continue by installing a Bypass line from TC #1 to #4 TC.

Install tee at TC #4 and rerun the test with the Bypass line open.

If the test procedures still indicate a leaky #2 shutoff, testing cannot continue until the shutoff is repaired.

Test #2 – Tightness of the #2 Check Valve

A steady leak from the vent indicates a 2nd check failure - intermittent discharge from the vent indicates a fluctuating supply pressure and testing can continue.

Test #3 – Tightness of the #1 Check Valve

If the differential is below 5 psid but above the relief valve opening point, the 1st check requires maintenance. There may be damage to the rubber disc or the seating surface or both. If the first differential falls until the relief valve starts to discharge, the first check seat or disc may be damaged or fouled with dirt. There may also be internal leakage through the relief valve diaphragm.

Test #4 – Relief Valve Opening

If the relief valve opening point is below 2 psid, the relief valve requires servicing.

If the relief valve doesn't open and the Bypass is wide open, the #2 shutoff may be leaking.

Returning Valve to Service

Upon reinstating the valve, if you receive a constant discharge from your relief valve there is a possibility of the sensing tube being clogged.

FOR CERTIFICATION CLASS USE ONLY